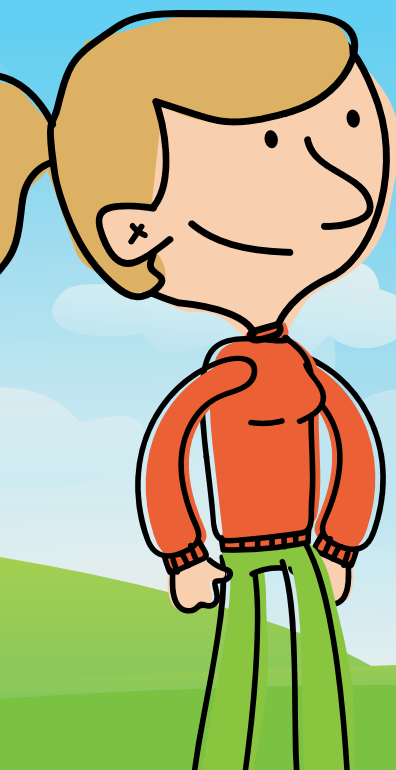




RENHÅLLNINGEN
KRISTIANSTAD

Waste sorting guide for

HOUSES AND HOLIDAY COTTAGES



Waste sorting

YOU SORT, WE RECYCLE

Waste is an asset and a resource that must be made use of so as to reduce emissions*, save energy and materials. The simplest way to do this is to sort our waste. Waste sorting means that everyone sorts their waste according to what material it consists of and then places the waste in the correct bin compartment. We then ensure that the materials are recycled in the best possible way!

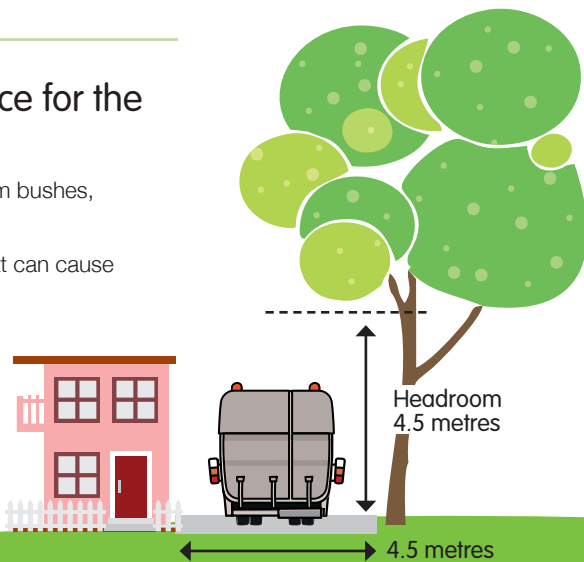
Tips about how to sort your waste efficiently!

1. Remove all food waste from food packaging. If you want to avoid unpleasant smells, you can rinse them out with cold water.
2. Flatten the packaging and if possible, stack them inside one another. That will save space in the bins and in the waste lorry.
3. Use a plastics minimiser to pack soft plastics. That will save space and prevent it from getting stuck in the waste lorry when collected. Read more about the plastics minimiser on page 8.

In the shops, every third paper carton is made out of recycled paper.

Passable road - make space for the waste lorry

- Make sure there is good visibility. Trim bushes, trees and hedges.
- Make sure you remove branches that can cause an obstruction along the road.
- Make sure there is somewhere to turn if you live on a dead-end road.
- Make sure that it is possible for the waste lorry and other vehicles to drive on the road during all seasons.



Waste bins'

POSITIONING AND EMPTYING

The rental charge for the bins is including in your subscription. It is therefore your responsibility to ensure that they are positioned and stored in a secure way. Take care of them and clean them out now and again. That's good for the bins, our drivers and for you!

Positioning

The fyrfack bins have three wheels and are easy to move. The small wheel is lockable which provides stability. You can lock the wheel if it is turned towards the driver on waste collection day. Otherwise the wheel must be unlocked.

The fyrfack bins can face the direction that is easiest for you as long as they stand and are rolled on a hard, even surface with no edges (e.g. asphalt, paving stones or concrete). You must ensure that there is nothing in the way which could make it hard for the waste collection workers to turn the bin around.

Positioning on collection day

- Place the bins by the edge of your property, as close as possible to where the waste lorry stops.
- The path to the bins must have a hard surface and be clear of any obstacles.
- In winter, the path must be cleared from snow and must not be slippery.
- The road must also be kept clear and accessible for the waste lorry.

If the bins are not emptied

Leave the bins where they are until they are emptied.
Contact Customer Service if more than one day passes.

Weekday holiday days

If there are holiday days in the middle of a week, waste collection may be 1-2 days early or late.
Up-to-date information about changes to collection days is always posted on Renhållningen's homepage.

Wrongly sorted waste

Wrongly sorted waste will not be collected. A note will be left on your bin telling you what you need to rectify. After that, contact Customer Service to book a new collection.

Frozen waste

In winter, waste can freeze and stick to the inside of the bin. Make sure your waste is loose in readiness for collection day.

REMEMBER

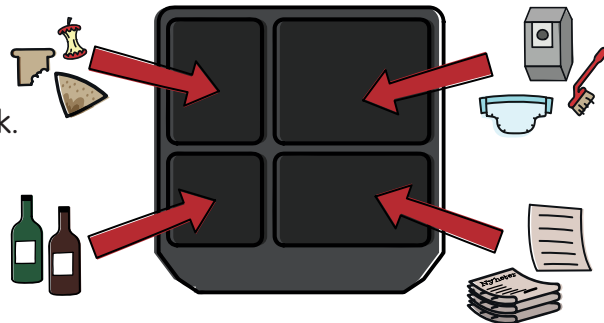
- Bins must not be overfull or too heavy.
- Only hang the electronic waste box on Bin 2 when it is full and needs to be emptied.

How to sort your waste

BIN 1 • BIN 2 WITH THE BOX FOR ELECTRONIC WASTE

Bin 1

Emptied every over week.



Food waste



Food waste is discarded in brown food waste bags that we provide. The bags reduce the risk of unpleasant smells, keep flies away and keep the bag more hygienic for everyone. They can withstand a lot of moisture but they need to have plenty of air. Place the bag in the holder we have given you.

FOR EXAMPLE Leftover food, fruit peel, vegetables, egg shell, coffee grounds, teabags, meat, poultry, fish, bread, biscuits etc.

Remaining waste



Remaining waste is what is left after you have sorted and removed packaging, newspapers, food waste, electronic waste and hazardous waste. Always place remaining waste in bags.

FOR EXAMPLE Vacuum cleaner bags, envelopes, nappies, sanitary towels, cotton swabs, razors, cigarette ends, snuff, cat litter, washing-up brushes, toothbrushes, dish cloths, CD covers, chewing gum

Coloured glass bottles/jars

NB! Tumblers/glasses made of coloured glass must be discarded as landfill at a recycling centre.



FOR EXAMPLE Bottles and jars made of coloured glass. Metal lids, bottle tops and capsules are discarded with metal containers.

Newspapers



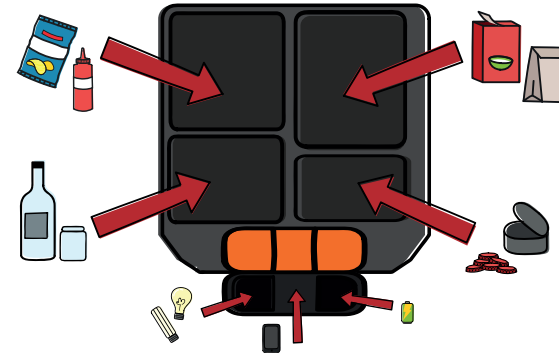
NB! Envelopes, post-it notes and paper products with glue are sorted as remaining waste.

FOR EXAMPLE Advertising flyers, brochures, receipts, newspapers, magazines, office paper and drawing paper.

Bin 2

Emptied every fourth week.

There is information about the electronic waste box on the next page.



Plastic packaging



Use a plastics minimiser to pack soft plastics since that saves space in both the bin and the waste lorry. Read more about the plastics minimiser on page 8.

FOR EXAMPLE Plastic bags, styrofoam, meat trays, clingfilm, shower gel bottles, vacuum-formed plastic, refill bags, sweets bags, crisps bags, plastic containers.

Paper packaging

Flatten and fold the paper packaging as best you can and pack them inside one another to save space.

FOR EXAMPLE Bags of flour, cereal cartons, egg cartons, milk and yoghurt cartons, pizza cartons, toilet rolls, kitchen rolls.



Transparent glass bottles/jars

NB! Tumblers/glasses made of transparent glass must be discarded as landfill at a recycling centre.



FOR EXAMPLE Bottles and jars made of transparent glass. Metal lids, bottle tops and capsules are discarded with metal containers.

Metal containers



Save space in the bin by flattening tins (remove the bottom of the tin before flattening it).

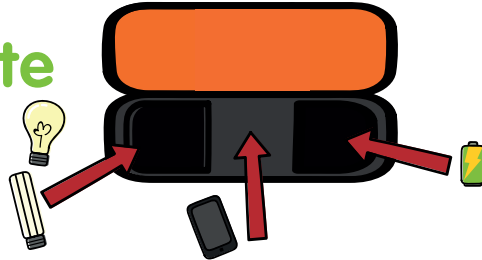
FOR EXAMPLE Tins, tubes, dry paint tins, aluminium foil/containers, disposable barbecue grills, tin lids, capsules, foil lids

How to sort your waste

BOX FOR ELECTRONIC WASTE • OTHER WASTE

Box for electronic waste

Hang the box on Bin 2 when it is almost full and needs to be emptied.



Bulbs

NB! Fluorescent lamps must be handed in to a manned recycling centre.

FOR EXAMPLE *Bulbs, LED lights, low-energy bulbs, halogen bulbs.*

Batteries

NB! Large batteries, for example, car batteries, must be taken to a manned recycling centre.

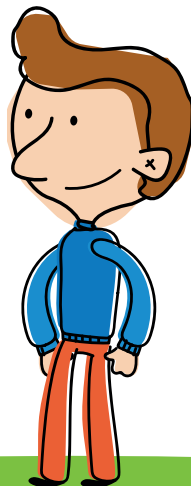
FOR EXAMPLE *Small batteries, button cells batteries, batteries in birthday cards with sound.*

Small electronic waste

Electronic items that do not fit into the box must be handed in to a manned recycling centre.

FOR EXAMPLE *Old mobile phones, shavers, remote controls, toys with built-in batteries.*

Store your box for electronic waste indoors or in your garage until it is emptied.



Could someone else make use of your old things? Hand them in to Reuse (Återbruk) at your recycling centre (AVC)!

Other waste

Bulky waste

Can be handed in free of charge at a manned recycling centre.

Can be collected from your home but a charge will be made. Request collection via Customer Service latest one week before we are due to come to your area. Our collection schedule is posted on our homepage.

FOR EXAMPLE *Furniture, bicycles, bathtub and household utensils.*

Hazardous waste

Can be handed in free of charge at a manned recycling centre.

Can be collected from your home but a charge will be made. You can hand in up to one cubic metre or maximum 25 kilos of hazardous waste at any one time. The waste will be collected within five days after you make your order.

FOR EXAMPLE *Oil, paint, chemicals, solvents, detergents, spray cans.*

Electronic waste

Can be handed in free of charge at a manned recycling centre.

Can be collected from your home but a charge will be made. Request collection via Customer Service latest one week before we are due to come to your area. Our collection schedule is posted on our homepage.

FOR EXAMPLE *White goods, refrigerators, freezers, televisions, computers, household appliances.*

Garden waste

Can be handed in free of charge at a manned recycling centre.

Can be collected Subscribe to a 370-litre garden waste skip. Collection once a fortnight from March to November. Subscribe via Customer Service.

FOR EXAMPLE *Grass, moss, hedge trimmings, leaves, twigs.*

Textiles

Place in the special containers that are found, for example, at our manned recycling centres.

FOR EXAMPLE *Clothes, home textiles, sheets, towels, curtains, shoes, accessories.*

Medicines and syringes/cannulas

Hand in to a chemist's shop. Chemist's shops do not accept clinical thermometers. Batteries are placed in the box for electronic waste or taken to a manned recycling centre.

FOR EXAMPLE *Medicines, syringes/cannulas.*

Waste sorting in the home

SOME SIMPLE TIPS

Waste sorting always begins in your home. To get started, you can begin by sorting one material and then gradually add more materials. Alternatively, you can start sorting everything at once into many different containers. The main thing is that it is quick and easy for you to sort your waste in the bins.

How to sort waste successfully

- Use simple containers that are easy to carry.
- Label them clearly.
- Flatten, cut into pieces and fold your waste - it will then take up much less space.

Free plastics minimiser

Soft plastic can be bulky and take up an unnecessarily large amount of space in the bin and get stuck in the waste lorry. If you use a plastics minimiser, you can easily pack down soft plastics and save a lot of space.

If you do not already have a plastics minimiser, you can get one from your nearest recycling centre or from Renhållningen at Bruksgatan 5.

Extra bins

Sometimes there is not enough space no matter how good you are at sorting your waste. In that case, we can provide an extra bin for food waste, remaining waste, plastic and paper packaging.

Contact Customer Service to order one.

Packaging that consists of several different materials

Packaging that consists of several different materials (which cannot be separated) is sorted according to the predominant material.

Food waste - useful tips

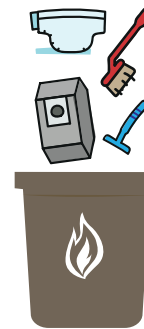
1. Let food waste drain off properly before you put it in the food waste bag.
2. Place the food waste bag in the holder we have given you. The food waste bags can withstand a lot of moisture but they need to have plenty of air.
3. Wrap smelly food waste in kitchen roll or newspaper.
4. Place folded newspaper at the bottom of the bag to prevent any smell.
5. Only fill it to the dotted line.



Storage suggestions

Food waste, soft plastics and remaining waste must be packaged before being discarded in the bin.

Remaining waste	Packaging material	Batteries, bulbs and small electronic waste	Minimiser
-----------------	--------------------	---	-----------



Always place remaining waste in a plastic bag. Tie up the bag to close it before discarding it in the bin.



If you don't have much space in your home, you can put all packaging in the same container in your home and then sort it at your waste bins.



Collect the waste in a small container. Then sort it and place in the electronic waste box.



The plastics minimiser is used to compress soft plastics. You can put soft plastic in an empty bread-bag.

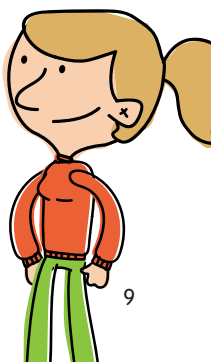
Landfill and hazardous waste	Newspapers
------------------------------	------------



Very little waste ends up as landfill. We suggest you store landfill items together with hazardous waste and then take them to one of our recycling centres (ÅVCs).



Can be collected in a paper bag. When the bag is full, empty the content into the newspaper compartment.



Some questions

FREQUENTLY ASKED QUESTIONS AND THEIR ANSWERS

If you have any questions about our waste disposal services, please feel free to contact Customer Service by phone or email. Our opening hours are posted on our homepage.

Telephone: 044-13 54 00 | Email: renhallningen@kristianstad.se

Homepage: www.renhallningen-kristianstad.se

Why fyrfack bins?

- Less impact on climate and the environment through fossil-free waste lorries and fewer trips to recycling points for you.
- Easier sorting at home will lead to increased sorting and recycling.
- Sustainable waste management saves the earth's resources.

May I share a bin with my neighbour?

Yes, it is possible to order a joint subscription for two or more properties. You will then share two 370-litre fyrfack bins. The flexible charge will be shared among the number of households while the basic charge will be unchanged for each household.

Contact Customer Service for help!

How do I order more food waste bags?

We will distribute food waste bags when we empty Bin 1 and Bin 2. If you need more bags, push an empty food waste bag under the lid of your bin and then the driver will leave a pack for you. You can also go to our homepage and order under "My waste" or by phoning Customer Service.

Why haven't my bins been emptied?

Sometimes the waste collection can be delayed. The waste lorry may break down, the drivers may be ill etc. Leave the bins where they are until they are emptied. Contact Customer Service if more than one day passes.

Up-to-date information about changes to collection days is always posted on our homepage.

It's easy to do things right!

WEB AND CUSTOMER SERVICE



"My waste"

Under "My waste", you can deal with many issues yourself, for example, change your subscription, order food waste bags or an extra collection.

It is easy to log in using your customer number and personal identity number or corporate identity number. Your customer number is stated on your invoice.



Waste sorting guide

On our homepage, there is a digital waste sorting guide that will help you to sort your waste correctly.

If you cannot find something in the guide, you can contact Customer Service and then we will update the guide.



Text message reminder about collection

Sign up for our text message service via our homepage and you will get a reminder the day before collection day. It's free of charge!



Waste collection calendar

Download a waste collection calendar www.renhallningen-kristianstad.se/mina-sopor

Welcome to our recycling centres (ÅVCs)

ÅVC SNÅRARP

Annedalsvägen 20, Kristianstad
Tel. 044-28 24 50

OPEN

Mon-Fri 9-18
Sat 9-15

BARRIER SYSTEM

ÅVC TOLLARP

Lastbilsvägen 1, Tollarp
Tel. 044-13 48 94

OPEN

Mon, Wed, Fri 9-18
Sun 9-16

BARRIER SYSTEM

ÅVC ÅHUS

Stuvaregatan, Åhus
Tel. 044-13 47 75

OPEN

Mon, Wed-Fri 9-18
Sat-Sun 9-16

BARRIER SYSTEM

ÅVC ARKELSTORP

Energivägen, Arkelstorp
Tel. 044-13 48 98

OPEN

Wed 9-18
Sat 9-16

BARRIER SYSTEM

ÅVC DEGERBERGA

Torskullevägen, Degeberga
Tel. 0733-13 48 95

OPEN

Mon, Thur 15-19

 HAZARDOUS WASTE
IS NOT ACCEPTED

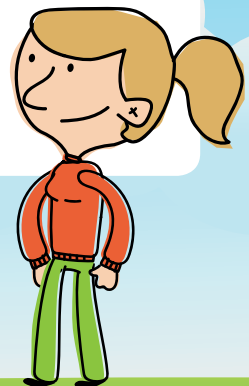
All recycling centres are
manned. We accept bulky
waste, garden waste,
electronic waste and
white goods.
**Remember to place the
waste in transparent sacks.**

The recycling centres are closed on public holidays (red days), Easter Saturday, Whitsun Eve, Midsummer's Eve, Christmas Eve and New Year's Eve.
Ordinary opening hours on 6 January, Maundy Thursday and 30 April.

Please look at our homepage to check for any changes to our opening hours.

ÅVC barrier system

We have set up a barrier system at our recycling centres in Åhus, Tollarp, Arkelstorp and Snårarp (Kristianstad). The person in your household who subscribes to our waste disposal services can enter automatically with his/her driving licence (Swedish licence). If there are more people in your household with a driving licence, they can also be registered. If you have a foreign driving licence, you can order a special access card. There is information about how to do this on our homepage.



RENHÅLLNINGEN
KRISTIANSTAD